

FLUORABODIES™

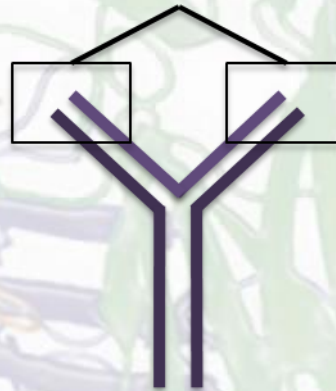
The Better Way To Do Fluorescence

By Sandia Biotech Inc.

How it works:

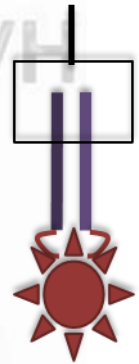
- Genetically engineered
- Bacterially expressed
- Contains 1 antigen binding domain
- Contains intrinsic fluorescent protein

Antigen binding domains



Full size antibody

Antigen binding domain



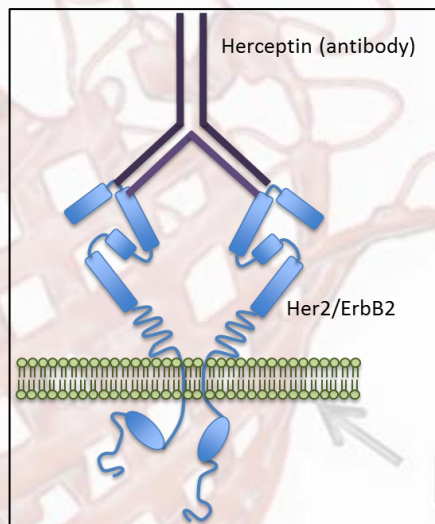
FluorAbody™

Advantages:

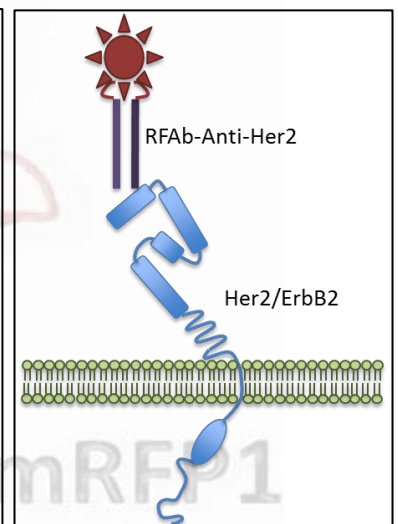
- **Specific**
 - No Fc non-specificity
- **Consistent**
 - No batch variation
 - Intrinsic fluorescence
- **Efficient**
 - No Fc blocking needed
 - No secondary needed
- **Cheaper**
 - Production savings passed onto consumer
- **Selection**
 - Various fluorescent proteins

Example: α ErbB2 FluorAbody™

Full size antibody



FluorAbody™



For more information and to place orders,
visit www.sandiabio.com or call 505-342-0224

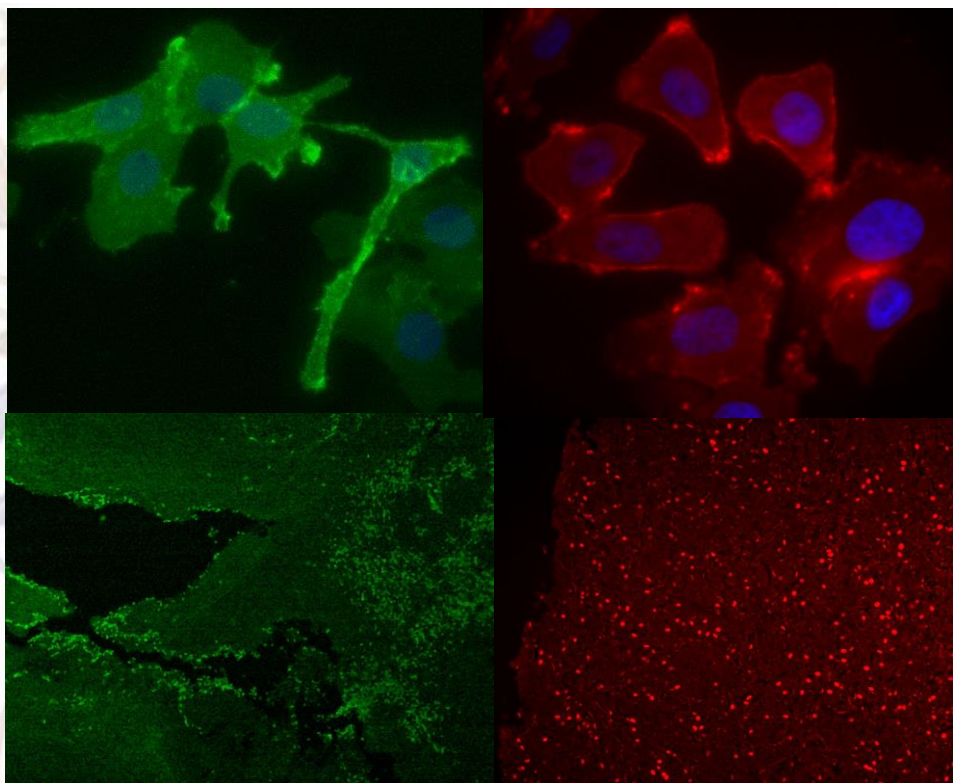
FLUORABODIES™

The Simpler Way To Do Fluorescence

Advantages:

- **Specific**
 - No Fc non-specificity
- **Consistent**
 - No batch variation
 - Intrinsic fluorescence
- **Time-saving**
 - No Fc blocking needed
 - No secondary needed
- **Affordable**
 - Production savings passed onto consumer
- **Array of colors**
 - Multiplexing capabilities

FluorAbody™ Applications

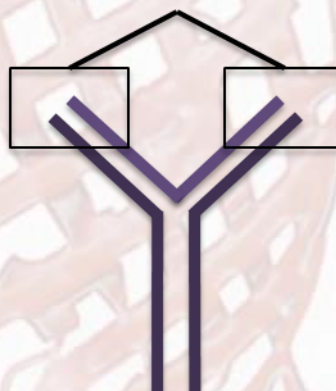


Applications: Fixed tissue staining, live-cell imaging, flow cytometry and other immunofluorescence assays.

How it works:

- Genetically engineered
- Bacterially expressed
- 1 antigen binding domain
- Innately fluorescent protein

Antigen binding domains



Full size antibody

Antigen binding domain



FluorAbody™

For more information on FluorAbodies in live cell imaging or any other inquiries, visit www.sandiabio.com or call 505-342-0224