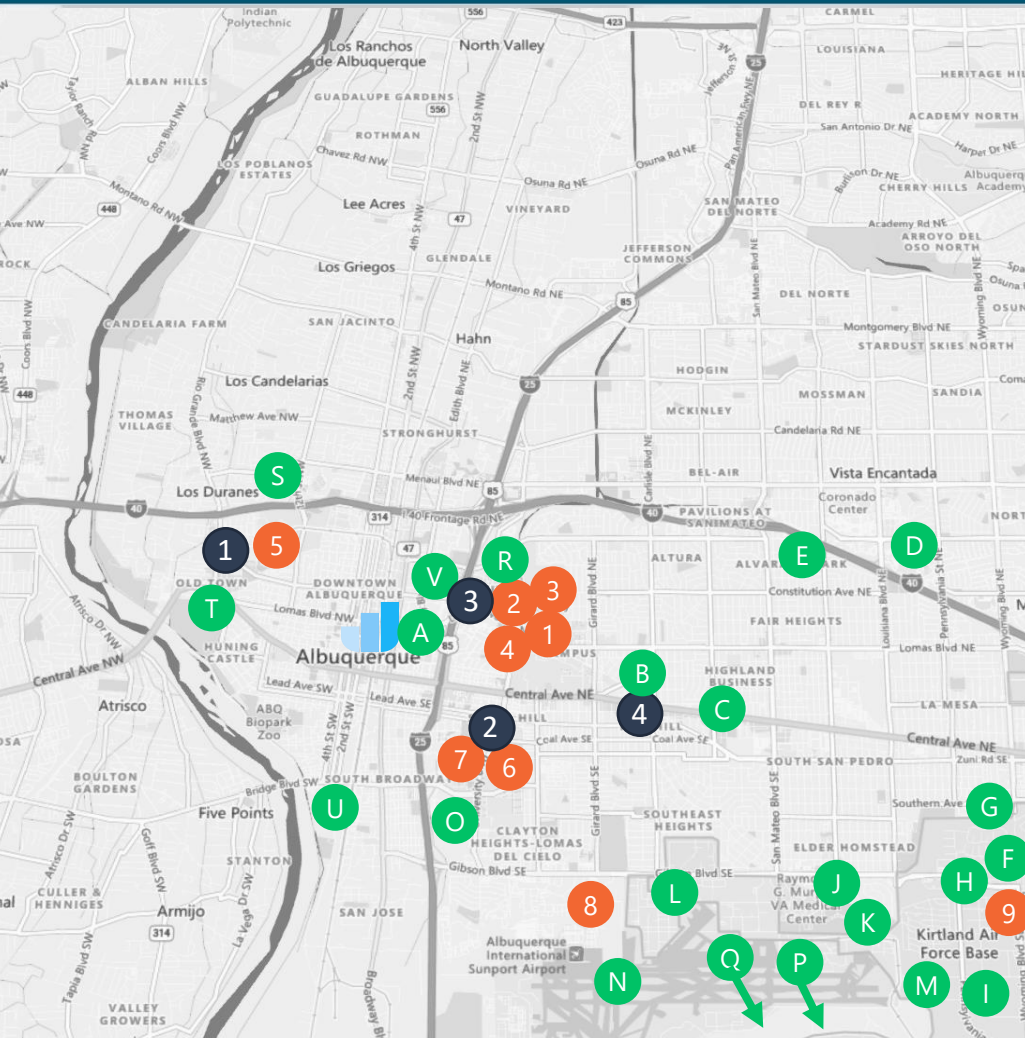


March 20 -22, 2024

Driving Tour & Community Assets



COMMUNITY ASSETS

- A** Innovate ABQ
- B** Q Station
- C** Historic Nob Hill
- D** Winrock Town Center
- E** The Bioscience Center
- F** Sandia Science & Technology Park
- G** National Museum of Nuclear Science
- H** Sandia National Laboratories
- I** Kirtland Air Force Base
- J** Biomedical Research Institute of New Mexico
- K** Lovelace Biomedical Research Institute
- L** Max Q @ Kirtland
- M** Air Force Research Laboratory
- N** Albuquerque International Sunport
- O** Lobo Sports & Tech District
- P** Innovation Park at Mesa Del Sol
- Q** Mesa Del Sol
- R** TriCore Laboratories
- S** Indian Pueblo Cultural Center
- T** Historic Old Town

MEETING LOCATIONS

- 1** Sawmill
- 2** CNM Marketplace
- 3** Embassy Suites by Hilton Albuquerque
- 4** Q Station

Driving Tour

EDUCATION ASSETS

- 1** University of New Mexico
- 2** University of New Mexico – Health Sciences
- 3** The Mind Research Network
- 4** Albuquerque Institute of Math & Science
- 5** ACE Leadership High School
- 6** Central New Mexico Community College
- 7** UNM Center for High Technology Materials

March 20 -22, 2024

Driving Tour & Community Assets

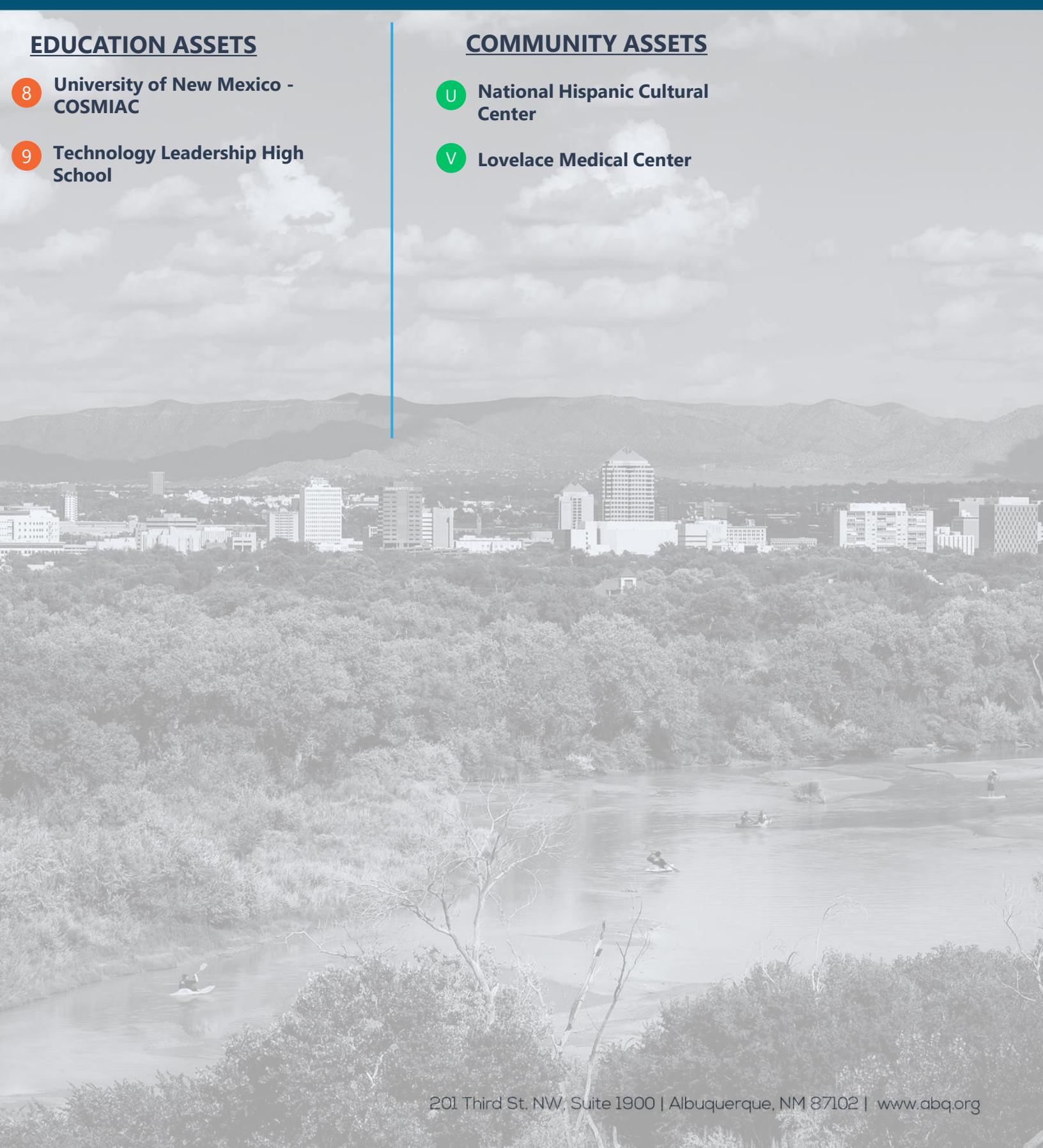


EDUCATION ASSETS

- 8 University of New Mexico - COSMIAC
- 9 Technology Leadership High School

COMMUNITY ASSETS

- U National Hispanic Cultural Center
- V Lovelace Medical Center



March 20 -22, 2024



Meeting Locations

1 Sawmill District



Explore Albuquerque's newest destination for the savvy traveler, originally the site of the American Lumber Company. North of historic Old Town, the Sawmill District is being re-imagined and redeveloped into a vibrant neighborhood of loft-style housing, artist studios and retail space. Its new shops, art and entertainment reflect New Mexico's rich culture and emerging International trends.

The Sawmill Market brings to the District a 25,000 square-foot food hall with numerous local food vendors showcasing a multitude of culinary traditions. It not only features restaurants and bars but also offers entertainment venues, art galleries, and more.

2 CNM Community College Marketplace

Envisioned as a new-concept Marketplace and co-ed hangout for CNM students and the neighboring community, this new 3-story, 16,502 sf building offers essential student amenities and inviting spaces for social interaction. The facility provides textbook, retail and support services spaces and opportunities for business incubation. Shared student and community spaces include a Starbucks café on the ground level and a common area on the third floor. The building needed two entrances to address both the community/pedestrian users entering from University Blvd. and those coming from the adjacent student parking lot.

The lobby is designed to address security requirements and patron flow of the dual entrance while enhancing vertical circulation that improves the retail experience.

An exterior translucent polycarbonate panel system at the second floor creates a glowing beacon in the evenings while flooding the retail spaces with natural light during the day. This relatively new system integrates stand-alone panels and storefront windows into a unique and cohesive wall assembly.



3 Embassy Suites by Hilton Albuquerque



Off of I-25, two miles of downtown Albuquerque and the historic Old Town. Balloon Fiesta Park, site of the Albuquerque hot-air balloon festival, is 11 miles away.

Embassy Suites has a ballroom accommodating up to 1,500 guests, free made-to-order breakfast, and complimentary evening receptions.

4 Q Station

Q Station is designed to allow aerospace, directed energy and related tech companies to work more seamlessly with government entities and private industry to encourage better, faster innovation that the country needs.

Q station will serve as a landing pad for in and out-of-state tech companies by providing a workspace while they develop opportunities in New Mexico and connect to our world-class high-tech ecosystem. Q station will also house ongoing programs and services to benefit these companies and the entire New Mexico tech industry.



A Innovate ABQ



Innovate ABQ is a public-private partnership created to develop a 7-acre innovation district in downtown Albuquerque to foster economic development and job creation in New Mexico. The site is intended to help put the region on a path to higher growth by improving the productivity of people and firms in ways that lead to better incomes and living standards for all. This vision includes more than 600,000 square feet of physically-compact, technically-wired, walkable space devoted to bringing together New Mexico's innovators to foster the creation of long-term, job-creating ventures and increase access to opportunity for the entire community.

B Q Station

Q Station is designed to allow aerospace, directed energy and related tech companies to work more seamlessly with government entities and private industry to encourage better, faster innovation that the country needs. Q station will serve as a landing pad for in and out-of-state tech companies by providing a workspace while they develop opportunities in New Mexico and connect to our world-class high-tech ecosystem. Q station will also house ongoing programs and services to benefit these companies and the entire New Mexico tech industry.



C Historic Nob Hill



Nob Hill is a vibrant district with eclectic shops, swanky dining and chic nightspots. Its Route 66 architecture and neon signs, combined with predominantly locally owned shops, galleries and restaurants, make Nob Hill a hip and fashionable area.

D Winrock Town Center

Winrock Town Center is a distinctive and dynamic retail, hospitality, office and residential development at the gateway to Albuquerque's vital Uptown district.

This 83-acre site is going to feature 1.125 million square feet of retail, 825 multi-family residential units, a 160-room boutique hotel, 130,000 square feet of office space and a two-acre public park. The specialty retail section at the heart of the property surrounds a charming two-acre park with ice skating in the winter, concerts in the summer, and a beautiful waterfall and river running through its center.



E The Bioscience Center



The BioScience Center is an incubator/accelerator in Albuquerque, New Mexico nurturing biotech and life science startups.

The Center occupies a 19,500 sq-ft building in a centralized location – Albuquerque, New Mexico’s Uptown Area – providing offices, ten wet (chemistry and microbiology) laboratories totaling over 3,000 sq. ft., and shared facilities that include reception, IT infrastructure, group purchasing, kitchen, shower and conference space. The BioScience Center is not only a business incubator, but also a centralized resource about biotechnology activity in New Mexico.

F Sandia Science & Technology Park

Internationally recognized, master-planned, and strategically located, Albuquerque’s Sandia Science & Technology Park (SS&TP) is home to companies, engineers, and researchers involved in advancing new technologies. Currently 40 companies and organizations and nearly 2,000 employees reside in SS&TP’s 340-acre high-tech campus.

Adjacent to the multibillion-dollar engineering and science facilities of Sandia National Laboratories and the Air Force Research Laboratory (AFRL), the SS&TP’s mature companies and startups collaborate with these top laboratories on a broad assortment of technologies, products, and services.



G National Museum of Nuclear Science



Sandia's history reflects the changing national security needs of postwar America. Although Sandia National Laboratories originated as a single-mission engineering organization for nonnuclear components of nuclear weapons. Today it is a multiprogram laboratory employing more than 14,000 people and engaging in research supporting a broad spectrum of national security issues.

H Sandia National Laboratories

Sandia's history reflects the changing national security needs of postwar America. Although Sandia National Laboratories originated as a single-mission engineering organization for nonnuclear components of nuclear weapons. Today it is a multiprogram laboratory employing more than 14,000 people and engaging in research supporting a broad spectrum of national security issues.



I Kirtland Air Force Base



Kirtland Air Force Base (KAFB), one of New Mexico's four major military installations is located in the high desert of north-central New Mexico and occupies a majority of southeast Albuquerque. Directly adjacent to Sandia National Laboratories and the Air Force Research Laboratories. KAFB is home to more than 33,000 employees.

Approximately 1,200 active-duty servicemen and servicewomen retire from these bases each year, 800 of which are from Kirtland AFB alone.

J Biomedical Research Institute of New Mexico

The Biomedical Research Institute of New Mexico (BRINM) was incorporated in the state of New Mexico in 1989 to enable organizations external to the Veterans Administration to conduct research and support education on the VA campus in Albuquerque. BRINM acts as the intermediary on research contracts, ensuring compliance, purchasing goods and services, hiring personnel, invoicing sponsors for research funds and maintaining accounting for all projects it oversees. Furthermore, it reports on research and funding to the VA and other entities.

BRINM's purview includes Basic Research funded by government or non-profit health organizations, Clinical Trials sponsored by pharmaceutical companies and their intermediaries, and Clinical Trial Support Services through the CSP Pharmacy Coordinating Center that are sponsored by non-VA organizations.



K

Lovelace Biomedical Research Institute



Lovelace Biomedical is a not-for-profit contract research organization with a rich history of helping its pharmaceutical and biotechnology partners achieve great things. Over nearly seven decades, we have built a reputation for leveraging a multidisciplinary toolset to push the limits of preclinical research all while offering a streamlined customer experience, with fast, direct and personal access to our industry-leading scientific experts.

As a non-profit, Lovelace Biomedical invests and partners with our basic science partners that help deepen our bench. This includes our Lovelace Biomedical Research Institute basic science division that focuses on respiratory and infectious disease along with aerosol science. Our Mind Research Network Division performs research on clinical and nonclinical neuroscience.

L

Max Q @ Kirtland

Max Q @ Kirtland is a ground up 77-acre development on Air Force Base land that will service one of the largest employment centers in New Mexico. This mixed-use project will be broken into four phases. The first phase consists of approximately 19 acres east of Carlisle Blvd and broke ground in July of 2022.

The first phase is proposed to be a high density mixed-use "town center" style development with ground floor retail, drive-thru, hotels, restaurants, office, and R&D space. The development is available for ground lease, build-to-suit or to lease inline and end-cap drive-thru spaces in spec buildings. The site plan is subject to change based on the needs of tenants as the project evolves.



M Air Force Research Lab (AFRL)



Air Force Research Laboratory is the Air Force's only organization wholly dedicated to leading the discovery, development and integration of warfighting technologies for our air, space and cyberspace. AFRL is comprised of nine directorates located across the country. AFRL New Mexico is the proud home of two of those directorates: Directed Energy and Space Vehicles.

In addition to work in the laboratory, we are dedicated to advanced technology through partnerships with the private sector, academia and entrepreneurs through our various economic development initiatives.

AFRL is also committed to building the next generation of scientists and engineers through our outstanding STEM programs and out STEM outreach activities.

N Albuquerque International Sunport

The Albuquerque International Sunport, known for its distinct southwestern architecture and cultural décor, is New Mexico's largest commercial airport, welcoming over 5 million passengers each year. The Sunport boasts a world-class art collection, unique amenities, New Mexican cuisine, and many local artisanal gifts. Served by 8 major carriers, the Sunport offers non-stop service between ABQ and more than 20 destinations, all with worldwide connectivity.

The City of Albuquerque has prepared the Aviation Center of Excellence to be home to aviation and aerospace businesses, high-tech companies, manufacturing, and some retail. The property, once home to the airport's north/south runway, consists of 75 shovel-ready acres and includes direct runway access. After Universal Hydrogen has picked ACE for its new manufacturing hub, 4 acres remain.





Lobo Sports & Tech District



The Lobo Sports & Tech District encompasses more than 68 acres of developable land and is located within the 300 acres of University of New Mexico's South Campus. UNM's Football Stadium, the UNM Tennis Center, the UNM Basketball Arena 'The Pit' and the UNM Baseball Complex are all located with the Sports & Tech District.

Additionally, the district is also home to student housing at Lobo Village and the UNM Science & Technology Park, which consists of approximately 662,662 square feet of existing research and development, laboratory, office and mixed-use space. The tenant focus is on technology-based companies. Leasing and development options include ground leases, build-to-suit and space leases.



Innovation Park at Mesa Del Sol

Innovation Park is a 100+ acre plot of mixed-use Employment land controlled by Chirisa Investments. The land is located in Mesa Del Sol, a 16,000-acre mixed-use master planned live-work-play community in Albuquerque, New Mexico which is home to Netflix's ABQ Studios and the gleaming Aperture Center.

Innovation Park is a high potential site with a variety of potential uses. The site benefits from ample power allowing for the development of a 130 MW+ data center campus, among other uses. Netflix has recently announced plans to add 300 acres to their existing studios, right next door to Chirisa land, and as the Mesa Del Sol community develops and grows, there is potential for a masterplan town center development.



Q Mesa Del Sol



Mesa Del Sol's master plan calls for 18,000,000 square feet of industrial, commercial and office development, and 37,500 residences to house a population of 100,000 in a safe, smart and sustainable city. A combination of state and local government efforts have already attracted employers, like Netflix Studios, to the community.

Once completed, it will be one of the largest master-planned cities in the country. The master planned community in Albuquerque's southeast corner is an area with active commercial and residential growth, active construction of new, modern homes, and incredible development progress.

R TriCore Laboratories

TriCore was founded in 1998 as an independent, not-for-profit, clinical laboratory, sponsored through a unique collaboration between Presbyterian Healthcare Services and the University of New Mexico Health Sciences Center.

Our core competency is lab. From sample collection and analysis, to result reporting, to managing labs, to training the next generation of healthcare professionals, we have a relentless drive to improve processes, eliminate errors, and empower our partners to lead others to better healthcare through accurate diagnoses. Our network of specialized laboratories provides accurate and timely results, allowing clinicians to more easily care for their patients.



S Indian Pueblo Cultural Center



The Indian Pueblo Cultural Center is the Gateway to the 19 Pueblos of New Mexico.

The Indian Pueblo Cultural Center (IPCC) is responsible for preserving and perpetuating Pueblo culture and advancing understanding – by presenting with dignity and respect – the accomplishments and evolving history of the Pueblo people of New Mexico. The Center is comprised of museum and gallery space, a collection of murals and other Native arts and artifacts, a library, archives, an education department, a teaching kitchen/restaurant, and cultural programming and events – each celebrating the Pueblo culture of New Mexico.

T Historic Old Town

Historic Old Town has been the heart of Albuquerque since the city was founded here in 1706. Today, Old Town is the city's cultural center, with numerous museums and more than 100 shops, galleries and restaurants.



U National Hispanic Cultural Center



The National Hispanic Cultural Center is dedicated to the preservation, promotion and advancement of Hispanic culture, arts and humanities.

The Center presents exhibitions, lectures, book readings, performing arts and educational programming that are meaningful to the local community. It offers the Hispanic, Chicano and Latinx artist a place to present their work and bring it to the national stage. The NHCC is committed to making a cultural home for the diverse identities that shape the community.

The NHCC also houses the Spanish Resource Center, a branch of the Spanish Embassy, and Instituto Cervantes. The National Hispanic Cultural Center is a division of the New Mexico Department of Cultural Affairs and is further supported by the National Hispanic Cultural Center Foundation.

V Lovelace Medical Center

Lovelace Medical Center is a patient-centered hospital featuring state-of-the-art equipment and a round-the-clock emergency department that includes a dedicated area for treating senior patients.

Lovelace offers high-quality, high-tech medicine in a facility that has become a symbol of health and wellness in the heart of the city it serves. Nowhere else in the state will you find technology like our Gamma Knife Center, capable of treating complex, often inoperable, conditions of the brain.



W Amazon Distribution Centers



Amazon announced in late 2019 the Albuquerque Amazon Fulfillment Center which has a 600,000 SF floor plate and is 5 stories for a total footprint of 3 million SF. The facility currently employs more than 1,000 workers and is adding to its Albuquerque presence with the addition of a delivery station and sortation center, which add hundreds of additional jobs. Construction for the 270,000-square-foot sortation center started in January 2021 and opened later in the same year.

In February 2022, Amazon announced an additional fulfillment center in the Village of Los Lunas. The 1-million square-foot center is scheduled to begin operating in 2023 and will employ around 600 people.

X Double Eagle II Airport

Double Eagle II Airport (AEG) is an active general aviation facility on Albuquerque's west side. There are approximately 240 based aircraft and 120,000 annual operations comprising training, military, air ambulance, charter, private and corporate flights.

The airport sits at an elevation of 5,834 feet above sea level and is located approximately eight miles north of Interstate 40 at the top of Nine Mile Hill on Albuquerque's West Mesa.





Meta Datacenter



Meta recently announced the completion of its fourth data center building in Los Lunas. Two additional buildings are under construction at the moment. When complete the Meta Data Center campus is expected to be more than one million square feet.

The estimated cost of the first two initial structures was just over \$800 million and both were completed in two-year timeframe.



Central New Mexico Rail Park

Central New Mexico Rail Park contains 1,420 acres of property located in Los Lunas, New Mexico. The rail-served industrial park has received certification as part of BNSF Railway's Certification Site program.

BNSF certification ensures a site is ready for rapid acquisition and development through a comprehensive evaluation of existing and projected infrastructure, environmental and geotechnical standards, utility evaluation and site availability.

In June 2022 Manna Capital and Ball Corporation announced an alliance in which Manna will construct and operate a state-of-the-art aluminum can sheet rolling mill and recycling center at the park.

Construction is expected to start in late 2023 and Manna Capital expects operations to be underway in 2026, employing more than 950 workers.



ZA BNSF Fueling and Inspection Yard



The "Hub City" of Belen serves the New Mexico Rail Runner Express and BNSF rail systems. To this day, an average of 110 trains travel through Belen in a 24-hour period on the Southern Transcon.

ZB Presbyterian Rust Medical Center

Presbyterian Rust Medical Center offers a wide range of medical services and treatment options to help you and your family stay healthy.

As a community-based hospital, we continuously update our clinical programs and medical facilities to meet both the changing needs of the community and advances in technology. The providers at Rust Medical Center offer patient-centered care, supported by a team of experienced healthcare professionals.

The New Mexico Hospital Association (NMHA) recognized Presbyterian Rust Medical Center as a Quest for Excellence Award winner for their work in continuing to improve the quality care for patients, especially during the COVID-19 pandemic. Rust Medical Center was selected as the winner in the General Acute Hospital category and was also selected Top Overall Hospital.



ZC Lovelace Westside Hospital



For over 30 years, Lovelace Westside Hospital has been committed to offering Rio Rancho and Westside residents the highest quality care.

Our 24-hour emergency department offers patients the ability to see a provider in about 30 minutes or less and also includes dedicated private rooms for our senior patients and for children.

Lovelace Westside Hospital offers a wide range of inpatient and outpatient surgical capabilities such as Ear Nose and Throat (ENT), bariatric and orthopedic service lines.

We are also home to a state-of-the-art sleep center, providing diagnostic testing and a treatment program to improve the quality of your sleep.

ZD Intel Corporation

Intel has had a major manufacturing presence in Rio Rancho since 1980. Operations began with fewer than 25 employees; today, Intel New Mexico is the largest private-sector industrial employer in Albuquerque and the second largest employer in the state, currently expanding its Rio Rancho location with a \$3.5 billion investment and increasing its local workforce to more than 2,000 employees.

Intel New Mexico employees manufacture and test technology products for mobile, desktop, server, and workstation computing at our Fab 11X manufacturing complex. Fab 11X includes 400,000 square feet of clean room space, making it the largest clean room operated by Intel globally and one of the largest in the world.

The state of New Mexico worked with Intel to create what was then the third-fastest supercomputer in the world (currently ranked No. 32). The Intel® Xeon® processor-powered supercomputer, known as "Encanto," is housed at the Rio Rancho campus.



ZE Nature's Toolbox



Nature's Toolbox (NTx) is working to commercialize its cell-free technology that will expedite the development and manufacturing of vaccines and pharmaceuticals using mRNA and protein technology, now being studied and utilized in the fight against COVID-19.

The company is set to bring \$30 million in private investment to its new Rio Rancho project and hire 116 employees with an average salary of \$74,000 a year. The total additional payroll associated with the expansion will be approximately \$74.5 million over the next 10 years. The direct economic impact over the decade is estimated at \$190 million.

ZF UNM Sandoval Regional Medical Center

UNM Sandoval Regional Medical Center (SRMC) is located in the Rio Rancho City Center near the Rio Rancho City Hall and UNM West.

The 200,000 square foot acute care facility is home to a total of 72 inpatient beds comprised of two 24-bed medical/surgical units, 12 intensive care beds and 12 senior behavioral health beds.

The facility also includes 13 emergency medicine beds, two of which are equipped for behavioral health crisis intervention. The facility is served by hospital-based, UNM Faculty Physicians in the areas of Radiology, Pathology, Emergency Medicine, Anesthesiology, Psychiatry and Hospitalists.



ZG Anderson Abruzzo Albuquerque International Balloon Museum



The Anderson-Abruzzo Albuquerque International Balloon Museum is the world's premier balloon museum facility dedicated to the art, culture, science, history, sport and spectacle of ballooning. The balloon museum, which opened in 2005, features one of the world's finest collections of ballooning equipment and memorabilia. It's fitting that it is located in Albuquerque, the capital of ballooning.

Set on the southern edge of Balloon Fiesta Park, the balloon museum is a focal point in the Albuquerque International Balloon Fiesta, but its scope is much broader.

In 2015, the Fédération Aéronautique Internationale (FAI) awarded the rare title of FAI Recommended Museum to the Anderson-Abruzzo Albuquerque International Balloon Museum.

ZH Southwest Soaring Museum

The Southwest Soaring Museum is one of only two museums in the United States that is dedicated to gliding/soaring, sailplanes and related aircraft.

Our focus is the history of gliding and soaring in the Western United States. The museum is an affiliate member of the Soaring Society of America.



ZI El Cabo Windfarm



The El Cabo Wind Farm project is expanding New Mexico's wind power capacity in one of the windiest and complex climates in the country. The 298-megawatt wind project is the largest wind producing facility in the state and produces enough clean, renewable energy to power 90,000 typical American homes.

It was built on approximately 60,000 acres of ranch land in rural Torrance County using State Trust Lands and used New Mexico-based firms for planning, engineering, and construction. The project benefits the residents of New Mexico by boosting New Mexico's economy and workforce, while helping make the state a key player in the wind energy industry.

1

University of New Mexico



Founded in 1889 as New Mexico's flagship institution, The University of New Mexico now occupies nearly 800 acres near old Route 66 in the heart of Albuquerque, a metropolitan area of more than 900,000 people.

UNM is one of only a dozen Hispanic-Serving Institution in the U.S. that are also classified by the Carnegie Commission on Higher Education as a R1: Doctoral Universities with very high research activity.

Among the University's outstanding research units are the Center for Advanced Research Computing, Cancer Center, New Mexico Engineering Research Institute, Center for High Technology Materials, Design Planning Assistance Center, Innovation Academy and the Mind Research Network.

2

University of New Mexico - Health Sciences Center

The Health Sciences Center is the state's largest integrated health care treatment, research and education organization. U.S. News and World Report's 2018 edition of "America's Best Graduate Schools" ranks the UNM School of Medicine 20th in primary care and 72nd in research. Additionally, in health disciplines, UNM's nursing-midwifery program is ranked seventh.

As the only academic medical center in New Mexico, UNM HSC is dedicated to pushing forward into uncharted research territory. Faculty, staff and trainees work tirelessly to address our state's pressing health needs. At any given time, the HSC manages over 300 clinical trials and 900 major research projects.



3 Mind Research Network



The Mind Research Network is dedicated to the discovery and advancement of clinical solutions for the prevention, diagnosis, and treatment of mental illness and other brain disorders.

With an extended community of academicians, researchers, graduate students and technicians, the MRN is uniquely positioned with its national infrastructure to link the brightest minds in neuroscience with some of the most cutting-edge neuroimaging capabilities in the world today.

4 Albuquerque Institute of Math & Science

Albuquerque Institute for Mathematics and Science @ UNM (AIMS@UNM) is committed to preparing its students, grades six through twelve, for college, community, and beyond through a rigorous focus on math and science and an emphasis on global participation.



5

ACE Leadership High School



At ACE, we educate and prepare young people in a caring and supportive environment to develop the skills and character necessary to become successful leaders in their communities and in their future ACE professions.

The Mission of ACE Leadership High School is to engage young people who love to design and build things with the skills they need to become leaders in the construction profession. We serve young people to have successful careers by caring for their intellectual, physical, and emotional well-being as students.

Students at ACE have been described as strong, perseverant, genuine, honest, and diverse. Many of our students have experienced things that could derail an average student. Our students have made the choice to continue their education in spite of obstacles they have faced. They learn outside of the box and use problem-solving and innovation to address real-world problems. Our students will be the future, and they will be prepared for work in any field.

6

Central New Mexico Community College

CNM is the largest higher education institution in New Mexico in terms of undergraduate enrollment. Since its inception in 1964, CNM's career-technical programs in business, health, technologies, and trades have continually been redesigned to provide students with the most current and relevant skills needed by local employers.

Representatives from local businesses and industries help CNM develop programs to ensure that students acquire skills needed for success in the workplace. The college has many transfer articulation agreements with four-year institutions around the state, including the University of New Mexico.



7

UNM – Center for High Technology Materials



The mission of CHTM is to create and sustain a culture of excellence to promote research and education in photonics, microelectronics and nanoscale materials and devices and their applications, foster interaction between UNM, federal laboratories, industry and promote an entrepreneurial spirit for economic development with a regional focus but of global importance.

We are committed to training the next generation of scientists, engineers, discoverers and entrepreneurs who can combine their technical training and critical thinking with excellent interpersonal and communication skills to become leaders of the 21st century.

8

COSMIAC - University of New Mexico

COSMIAC is an innovative research center at The University of New Mexico (UNM) in Albuquerque, NM. COSMIAC serves as a Tier-2 Research Center at the School of Engineering. UNM is a minority-serving academic institution. COSMIAC currently consists of approximately 30 full-time faculty, staff and consultants and 30 undergraduate and graduate students. All are US citizens. Personnel are cleared to the TS/SCI level. Customers include (but are not limited to) the US Air Force, Space Force, NASA, Leidos, and Northrop Grumman.

COSMIAC has approximately 15,000 square feet on three floors of the 2350 Alamo Avenue location and 15,000 square feet of high-bay space located at 2420 Alamo Avenue. This space includes cleanroom, laboratories and other development areas.



9 Technology Leadership High School



Technology Leadership High School prepares students for college and career in the technology fields with academic, social and emotional supports and through invaluable industry connections.

10 The International School at Mesa Del Sol

The International School at Mesa Del Sol is a PreK-12th grade public charter school, granted by the Albuquerque Public School District to teach the International Baccalaureate (IB) curriculum.

TIS is an IB Certified World School for the Primary Years Programme (K-5) and offers grades 6 - 12, including a middle school 6-8 and High School 9-12.



11 Albuquerque Academy



Albuquerque Academy is a non-denominational, coeducational, independent day school for approximately 1,150 students in grades six through 12. The Academy offers students an education that is without equal in the Southwest.

The Academy prides itself on offering an educational program based on creative, independent doing and thinking. The school motto, "scientia ad faciendum," or "knowledge for the sake of doing," reflects an underlying philosophy of achieving knowledge that is actionable.

12 Bosque School

Founded in 1994, Bosque School is an independent Albuquerque school, dedicated to challenging traditional education.

"Bosque School challenges traditional education for grades 6–12 with an inquiry-based curriculum in which students gain knowledge by researching and discovering solutions to real-world problems. At Bosque School, we instill a philosophy of lifelong learning, while abiding by our core values of inspiring academic excellence, cultivating community, fostering integrity, and learning from place."



13 Sandia Preparatory School



When Sandia Preparatory School students reach their senior year, and we ask them to write an essay for the Commencement Ceremony program, one resounding theme emerges: This place is home. Whether students are here from sixth grade on, or somewhere in between, they find their place. A place where teachers challenge and support them. Where friends become family. Where confidence and strength replace doubts and fears. A place to connect. To celebrate. To stand strong as lifelong learners and global citizens.

We are small by design. We want to know, support, and celebrate your child. Our cohesive community means no one goes overlooked or unnoticed. Small by design means greater opportunities for each student to participate and grow as a leader. Students can more easily master curriculum in a smaller learning environment where high aspirations and respectful relationships are encouraged. We want your child to enjoy a well-rounded, personalized experience.

14 UNM Valencia Campus Workforce Training Center

The UNM Workforce Training Center at the Valencia Campus delivers customized training for business, industry and government entities, offered on campus or at your place of business to prepare employees to better serve companies' needs. A variety of career-technical programs are also available for individuals to enhance their skills in order to enter the workforce or to embark on new careers.

Facilities at the include vocational labs, computer labs, classrooms, indoor/outdoor common areas, learning center, offices, and the Small Business Development Center.

