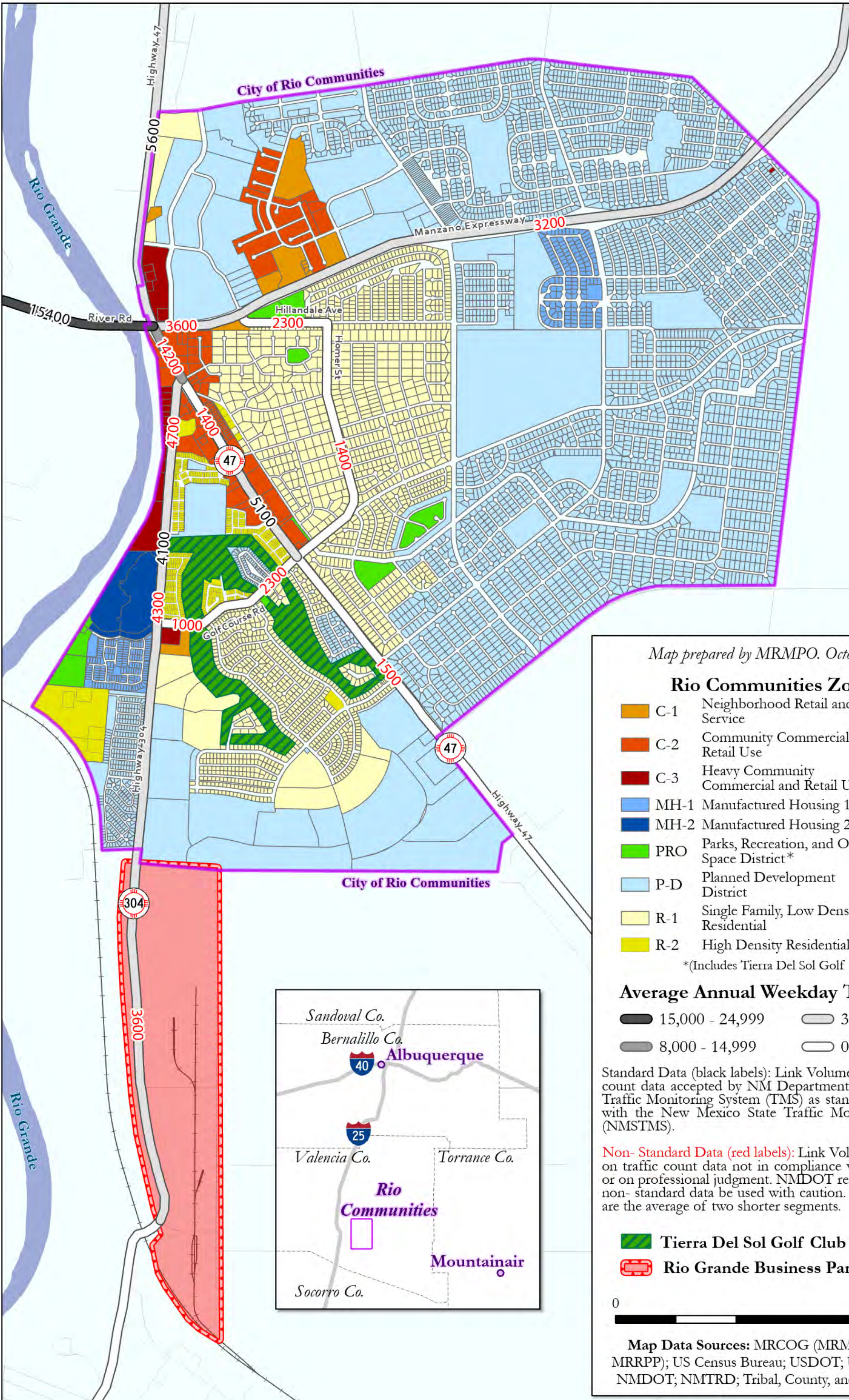




# City of Rio Communities Zoning and Traffic Counts



Map prepared by MRMPO. October 2023.

### Rio Communities Zoning

- C-1 Neighborhood Retail and Service
- C-2 Community Commercial and Retail Use
- C-3 Heavy Community Commercial and Retail Use
- MH-1 Manufactured Housing 1
- MH-2 Manufactured Housing 2
- PRO Parks, Recreation, and Open Space District\*
- P-D Planned Development District
- R-1 Single Family, Low Density Residential
- R-2 High Density Residential

\*(Includes Tierra Del Sol Golf Club)

### Average Annual Weekday Traffic 2022

- 15,000 - 24,999
- 3,000 - 7,999
- 8,000 - 14,999
- 0 - 2,999

Standard Data (black labels): Link Volume is based on traffic count data accepted by NM Department of Transportation Traffic Monitoring System (TMS) as standard in accordance with the New Mexico State Traffic Monitoring Standards (NMSTMS).

Non-Standard Data (red labels): Link Volume is based either on traffic count data not in compliance with the NMSTMS or on professional judgment. NMDOT recommends that the non-standard data be used with caution. Some count values are the average of two shorter segments.

- Tierra Del Sol Golf Club
- Rio Grande Business Park

0 1 Miles



Map Data Sources: MRCOG (MRMPO, RMRTD, MRRPP); US Census Bureau; USDOT; USGS; NMDFA; NMDOT; NMTRD; Tribal, County, and Local Entities.

